

## Swivel Clamp Connector Bases

Aluminum

### SPECIFICATION

#### Types

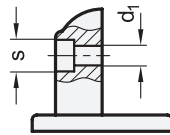
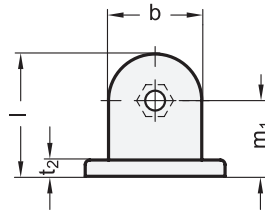
- Type **OZ**: Without centering step (smooth)
- Type **MZ**: With centering step
- Type **AV**: With external serration
- Type **IV**: With internal serration

Aluminum

- Powder coated  
Black, RAL 9005, textured finish **SW**
- Plain, matte shot-blasted **BL**

### INFORMATION

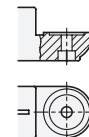
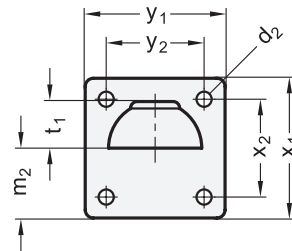
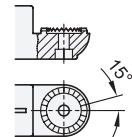
Swivel clamp connector bases GN 272 can be combined with swivel clamp connectors GN 274 (see page 1850), GN 276 (see page 1852) or GN 278 (see page 1856) to swivel clamp connector joints.



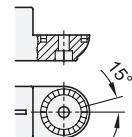
Type **OZ**



Type **AV**



Type **MZ**



Type **IV**

\* Complete with  
SW **BL**  
 RAL9005 Plain

### GN 272-OZ

Description	b	d1	d2	l	m1	m2	t1	t2	s	x1	x2	y1	y2	⚖
GN 272-40-OZ-*	40	8.5	6.5	52.5	32.5	30	20	7	13	60	42	60	42	110
GN 272-65-OZ-*	65	10.2	11	84.5	52	52.5	32.5	14	17	105	74	105	74	550

### GN 272-MZ

Description	b	d1	d2	l	m1	m2	t1	t2	s	x1	x2	y1	y2	⚖
GN 272-40-MZ-*	40	8.5	6.5	52.5	32.5	30	20	7	13	60	42	60	42	120
GN 272-65-MZ-*	65	10.2	11	84.5	52	52.5	32.5	14	17	105	74	105	74	555

### GN 272-AV

Description	b	d1	d2	l	m1	m2	t1	t2	s	x1	x2	y1	y2	⚖
GN 272-40-AV-*	40	8.5	6.5	52.5	32.5	30	20	7	13	60	42	60	42	120
GN 272-65-AV-*	65	10.2	11	84.5	52	52.5	32.5	14	17	105	74	105	74	555

### GN 272-IV

Description	b	d1	d2	l	m1	m2	t1	t2	s	x1	x2	y1	y2	⚖
GN 272-40-IV-*	40	8.5	6.5	52.5	32.5	30	20	7	13	60	42	60	42	110
GN 272-65-IV-*	65	10.2	11	84.5	52	52.5	32.5	14	17	105	74	105	74	550

Weight SW